

1

2

3

4

5

6

A

A

B

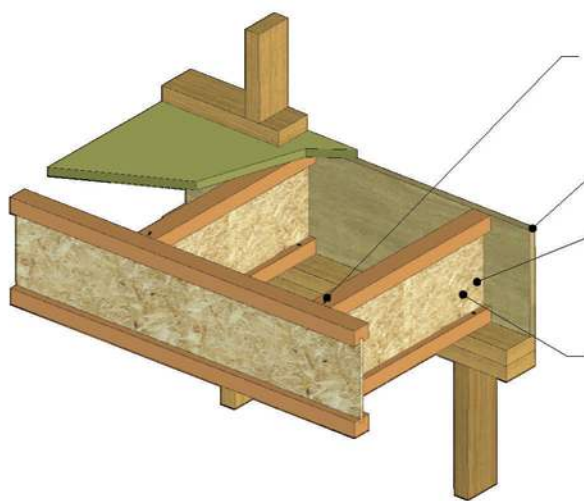
B

C

C

D

D



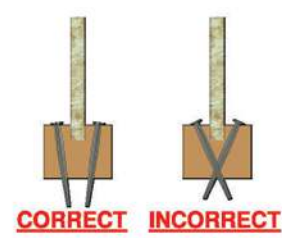
Attach I-Joist blocking to floor joist with one Ø3.15x75mm nail at the top and bottom flange.

OSB/Plywood Rim

Minimum 35mm end bearing required for I-Joists

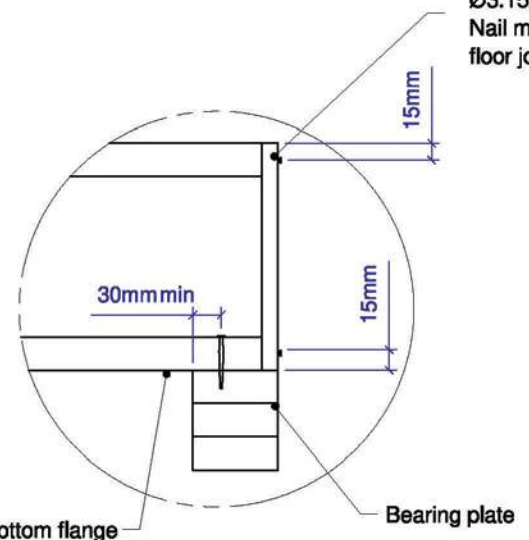
Attach I-Joist to top plate with one Ø3.15x65mm face nail at each side of bearing. To avoid splitting the flange, install nails at least 40mm from end of joist. Nails may be driven at an angle to avoid splitting the bearing plate.

I-JOIST BOTTOM FLANGE FIXING

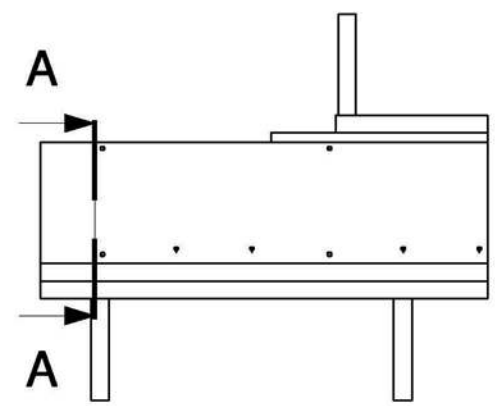


CORRECT INCORRECT

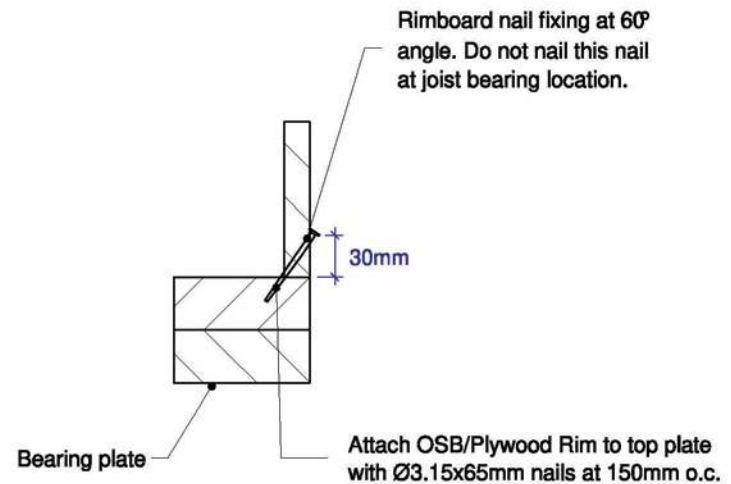
Attach OSB/Plywood Rim to floor joist with one Ø3.15x65mm nail at top and bottom. Nail must provide 25 mm minimum penetration into floor joist.



SECTION A-A



VIEW FACING RIMBOARD



Attach OSB/Plywood Rim to top plate with Ø3.15x65mm nails at 150mm o.c.

your partner for engineered timber solutions



DATE CREATED: 28/07/2020

DRAWN BY: B.S

CHECKED BY: --

DWG REV: --

TITLE:
**DETAIL 1B.2
EXTERIOR END WALL SUPPORT
(PREP.BLOCKING)**

NOTES:
1. Dimensions are in millimetres.
2. Tolerance on all dimensions to be +/- 0.5mm unless noted otherwise.
3. Written dimensions take precedence over scaled dimensions.

Private Confidential & Copyright
This drawing is the exclusive property of Dindas Australia. Copyright & all rights reserved. You hereby agree and undertake that you will not in anyway utilize, copy reproduce or take advantage of the drawing (or any part thereof) and disclose any information to other parties without the written consent of Dindas Australia.

SIZE
A4

SCALE
N.T.S

1

2

3

4

5

6