

1

2

3

4

5

6

A

A

B

B

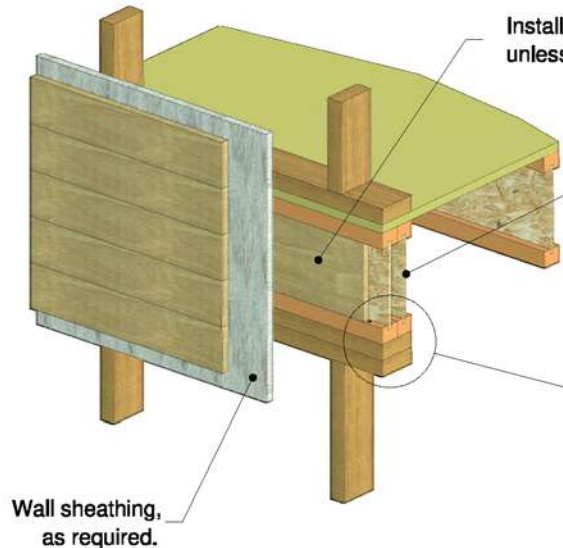
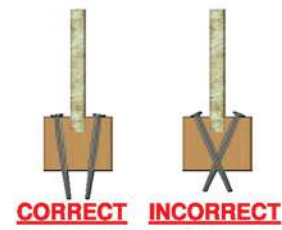
C

C

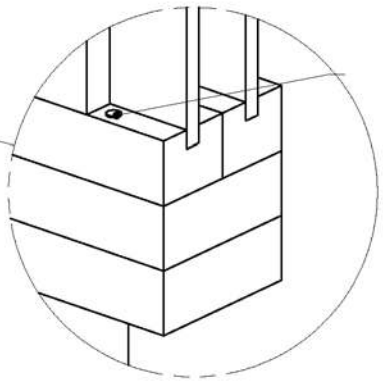
D

D

**I-JOIST BOTTOM FLANGE FIXING**



Max. I-Joist Rim capacities table are shown on next page. For double I-Joists, the table capacities may be doubled. Filler block in between joists is not required.



Attach I-Joist to top plate with Ø3.15x65mm nails at 150mm o.c.  
 To avoid splitting the flange, start nails at least 40mm from the end.  
 Drive nails at an angle to prevent splitting of the bearing plate.(when used for shear transfer, nail to the bearing plate with the same nails as required for decking).

*your partner for engineered timber solutions*

DATE CREATED: 28/07/2020	
DRAWN BY:	B.S
CHECKED BY:	--
DWG REV:	--

TITLE:

**DETAIL 1F  
DOUBLE I-JOIST RIM**

NOTES:

1. Dimensions are in millimetres.
2. Tolerance on all dimensions to be +/- 0.5mm unless noted otherwise.
3. Written dimensions take precedence over scaled dimensions.

**Private Confidential & Copyright**  
 This drawing is the exclusive property of Dindas Australia. Copyright & all rights reserved. You hereby agree and undertake that you will not in anyway utilize, copy reproduce or take advantage of the drawing (or any part thereof) and disclose any information to other parties without the written consent of Dindas Australia.

SIZE  
A4

SCALE  
N.T.S

1

2

3

4

5

6